

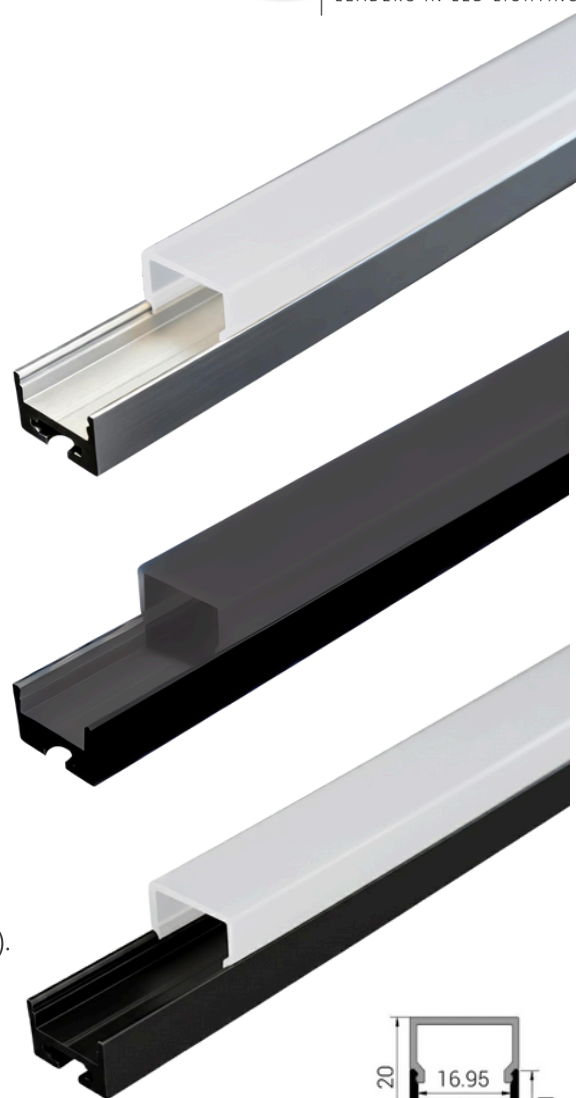
# Classic Slim LED Channel Surface-Mount Specification Sheet

## KEY HIGHLIGHTS

A timeless, low-profile silhouette engineered for universal tape light compatibility. This comprehensive system includes every essential component for a precision-grade assembly.

## SPECIFICATIONS & FEATURES

- Material: 6063-T5 Aircraft Grade Anodized Aluminum.
- Finish Options:
  - Satin Silver (Anodized)
  - Matte Black (Powder Coated)
  - Architectural White (Powder Coated)
- Lengths Options: 0.3m (1ft) or 2.5m (8ft) factory customizable.
- Interior Width: 16.95mm (Compatible with LED tape up to 16mm wide).
- Lens Material: UV-Resistant Polycarbonate (PC).
- Lens Style: Snap-in / Slide-in Flush Mount.
- Diffusion Options:
  - Opal/Frosted: Creates dot-free "neon" effect with high-density LED tape.
  - Semi-Clear: Higher output with visible diode points.
  - Black/Smoked: Architectural "hidden" look when off.
- Heat Dissipation: Efficiently extends LED lifespan by reducing operating temperature up to 15°C.
- Protection Rating: IP20 for standard indoor use.
- Mounting: Stainless steel hidden clips for surface mount. This Classic Slim LED Channel also features a field-adjustable aircraft cable suspension system, providing a minimalist, pendant-mounted aesthetic suitable for high-ceiling architectural applications.
- End Caps: Thermoplastic caps with and without wire-entry holes.
- Compatibility: Optimized for luzumi led Tape Light (Single Color, RGBW, and COB).
- Low glare and minimal color shift.



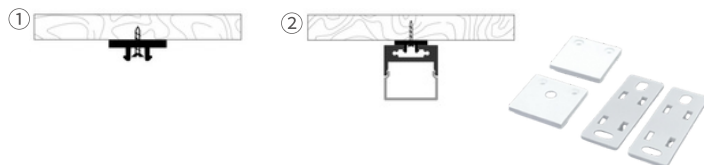
## WARRANTY

- 5-Year

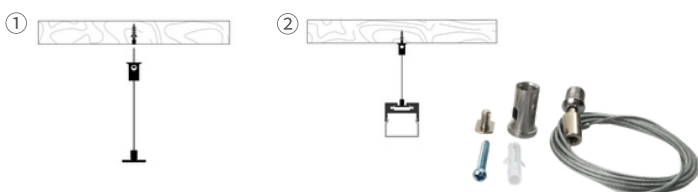
Note: The Warranty Period begins on the date of original shipment from our factory, the warranty covers product only and does not cover any labor or incidental charges related to service or warranty. This Warranty applies only to the original purchasers or authorized distributors.

## EASY MOUNTING & ACCESSORIES

### Surface-mount



### Pendant-mount



## HOW TO ORDER

Name	Channel Finish	Diffuser Option	Length (m / ft)	Mount Option
LCSM2011SQ	SS (Satin Silver)	F (Frosted)	1.5M	SM (Surface Mount)
	MB (Matte Black)	C (Clear)		P (Pendant)
	WH (White)	B (Black)		

Example: LCSM2011SQMBF1.5MSM

## COMPATIBLE LED TAPE & STRIP LIGHTS

Consult factory for led tape & strip lights not listed here

- Chromveo™
- Chromveo™ Damp & Wet location
- Ambiveo™ RGB
- Ambiveo™ RGB Pixel & addressable
- Scenveo™ RGBW
- Scenveo™ RGBW Pixel & Addressable
- Rxveo™ Warm Dim
- Rxveo™ Tunable White
- Axveo™ Single LED Cuttable
- Phiveo™ Sunlike
- Uxveo™ COB RGBW Addressable
- Nyxveo™ COB Tunable white
- Rayveo™ COB Warm Dim

